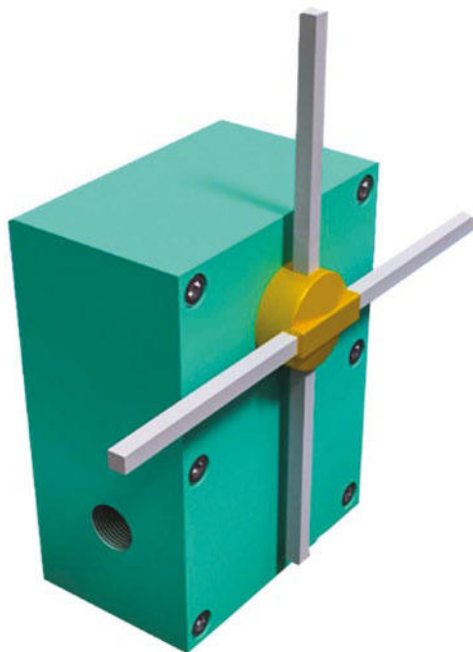


LIMITEX A

HAZARDOUS AREAS

Position limit switch



Explosion Proof cross position limit switch. Sturdy and reliable, Limitex A is designed to control the movement of overhead travelling cranes, hoists and complex machine tools operating in potentially explosive areas.

FEATURES

- Mechanical life of switches: 10 million operations.
- Operation frequency: 3000 / 3600 operations/hour.
- IP protection degree: Limitex AP is classified IP66.
- Extreme temperature resistance: -50°C to +55°C.
- G20 cast iron and cross rod support made of galvanized aluminum. Internal components are made of materials that guarantee long mechanical life and continuous performance.
- It features rugged external enclosure made of a special aluminum alloy with low copper and magnesium content or in AISI 316 stainless steel (optional) with compact dimensions to ensure reduced overall size.
- All materials and components used are wear resistant and guarantee protection of the unit against water and dust.



OPTIONS

- 4 snap action switches with 1NO+1NC contacts.
- Cross rods with 4 maintained positions every 90°.

CERTIFICATIONS

- CE marking.
- Atex certification EN 60079-0:2009, EN 60079-1:2007, EN 60079-31:2009.
- Conformity to Standards IECEx IEC 60079-0:2011, IEC 60079-1:2007-04 and IEC 60079-31:2008.






CERTIFICATIONS

Conformity to Atex Directives	2014/34/UE
	EN 60079-0 Explosive atmospheres - Equipment - General requirements
Conformity to Atex Standards	EN 60079-1 Explosive atmospheres - Equipment protection by flameproof enclosures "d"
	EN 60079-31 Equipment dust ignition protection by enclosure "t"
Conformity to IECEx Standards	IEC 60079-0 Explosive atmospheres - Equipment - General requirements
	IEC 60079-1 Explosive atmospheres - Equipment protection by flameproof enclosures "d"
	IEC 60079-31 Explosive atmospheres - Equipment dust ignition protection by enclosure "t"
Atex Certification	INERIS 11ATEX0057X
IECEX Certification	IECEX INE 11.0027X
	Exd IIB T4/T6 Gb
Protection modes	Exd IIC T4/T6 Gb
	Extb IIIC Db IP 66 T135°C/T85°C
Markings and homologations	  IEC IECEX

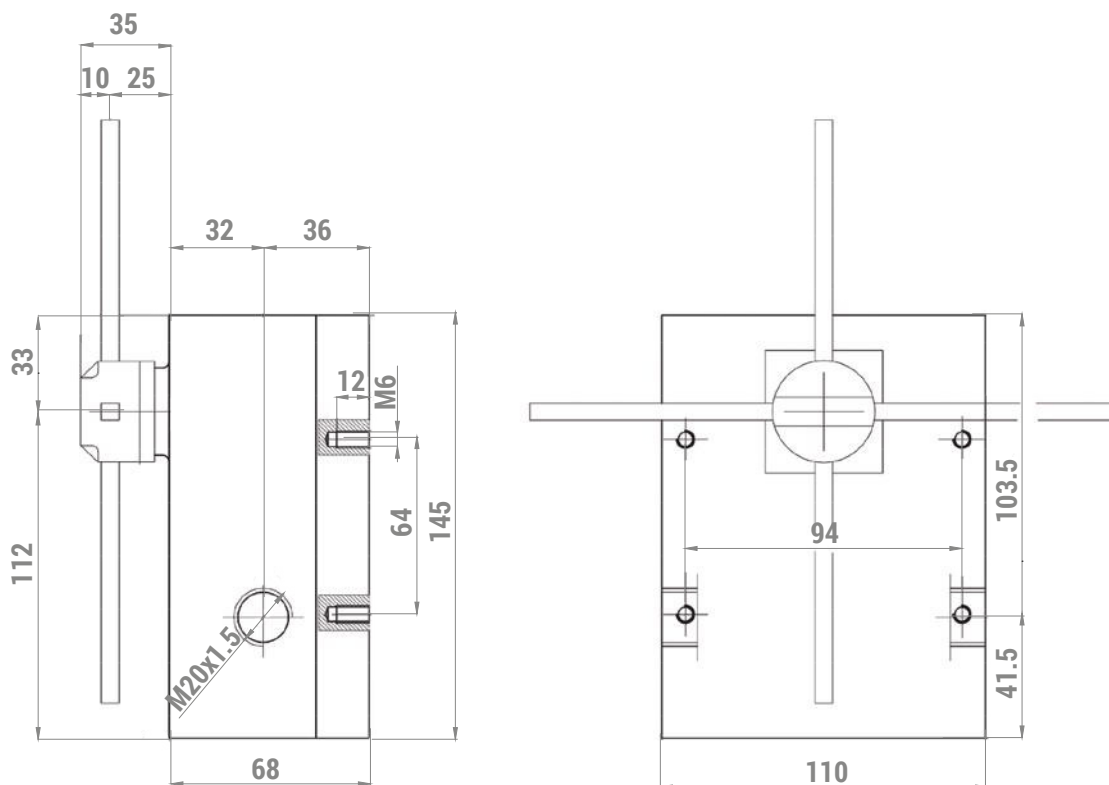
CARATTERISTICHE TECNICHE GENERALI

Operational ambient temperature	-50°C/+55°C
IP protection degree	IP 66
Operation frequency	3000 / 3600 operations/hour max
Insulation category	Class I according to IEC 536
Attack speed	Up to 3 m/s
Conic cable entries	½" ÷ 1" UNI 6125 GK ½" ÷ 1" NPT
Cylindrical cable entries	M20 ÷ 32 x 1,5 ISO 965/1 and ISO 965/3 middle class ½" ÷ 1" UNI/ISO228
Housing material	Cast iron Stainless steel AISI 316

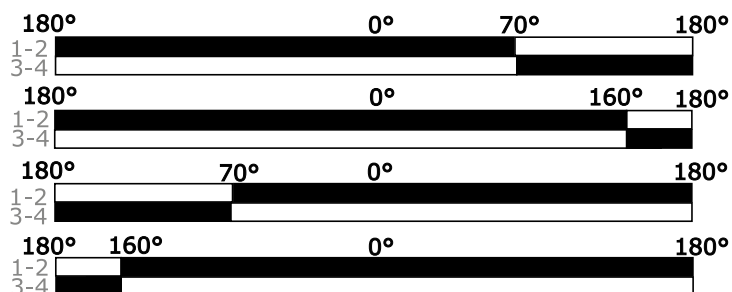
TECHNICAL SPECIFICATIONS OF THE SWITCHES

Rated thermal current	10A according to CEI EN 60947-5-1
Rated insulation voltage	300V~ (CEI EN 60947-5-1)
Maximum operating voltage	500V~
Nominal intensity	16A at 250V~
Mechanical durability	10x10 ⁶ operations
Terminal identification	According to CENELEC EN 50013
Connections	Screw connections (standard) or FASTON
Wires	1x2,5 mm ² , 2x1,5 mm ²
Contacts	1NO+1NC snap action
Contacts material	Silver
Markings and homologations	     UTE ASE

OVERALL DIMENSIONS (mm)



ACTUATING TRAVEL



REMARKS

Lined area for entering remarks.

07062024

